

# PDF-Guide

**Screenshots to guide you preparing a PDF for data-delivery to AustriaCard.**

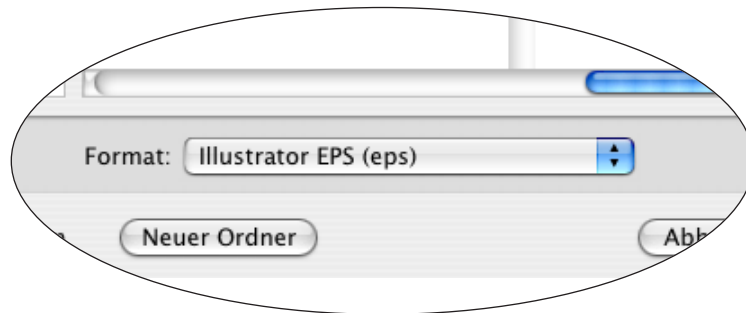
- Illustrator
- Indesign
- QuarkXpress
- Corel Draw

**Screenshots to configure the distiller-settings for your own.**

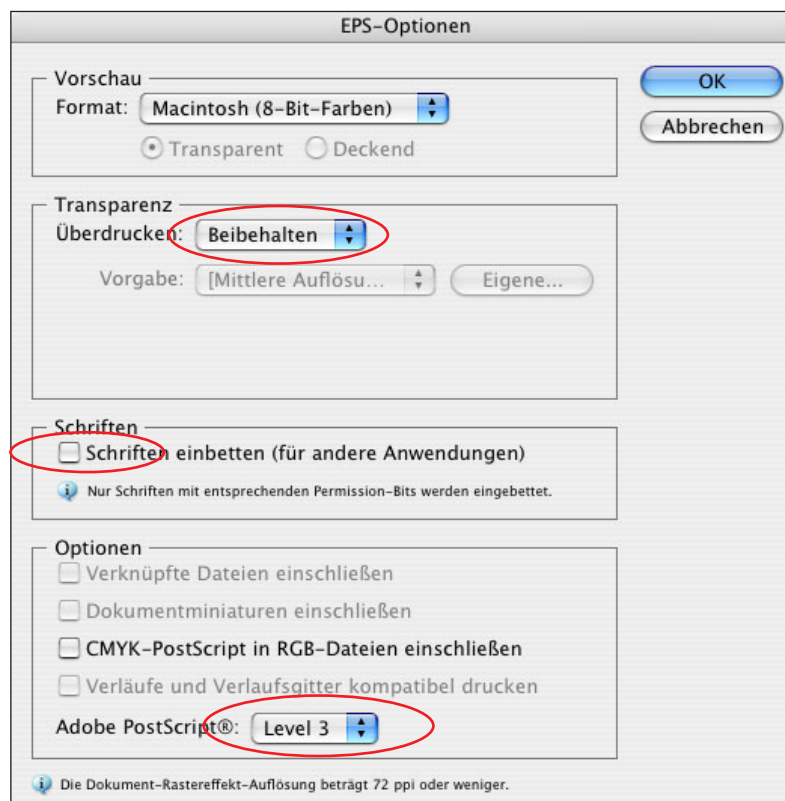
# Illustrator / EPS-Export

You should use this method if there are transparencies defined in the design. It is important to convert all texts to curves before these steps!

Step 1



Step 2



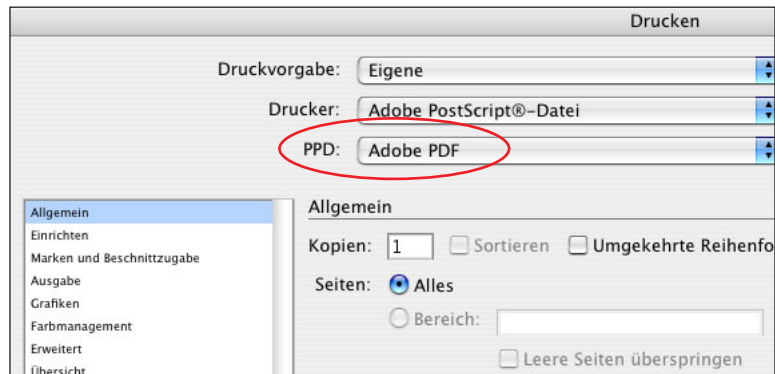
! Please enclose a printout or a JPG-file to the job-data to check the right visualization.

# Illustrator / PDF-Export

Step 1:

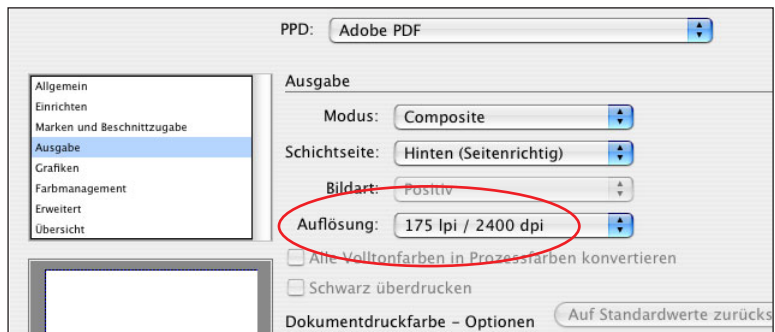
Use the correct PostScript-Printer-Definition-file (PPD).

Your PPD-file may have an other name than "Adobe PDF".



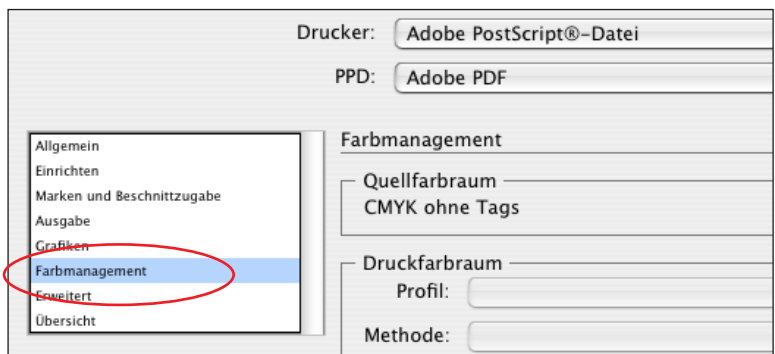
Step 2:

Please choose a resolution of 2400 dpi.



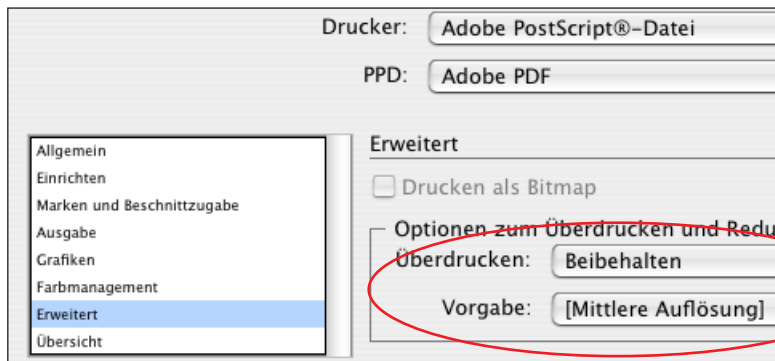
Step 3:

Don't use any colour-management.



Step 4:

The extended settings.



Please convert the created PS-file with Acrobat Distiller to a PDF-file. You can find the correct Distiller-settings at [www.austriacard.at](http://www.austriacard.at).

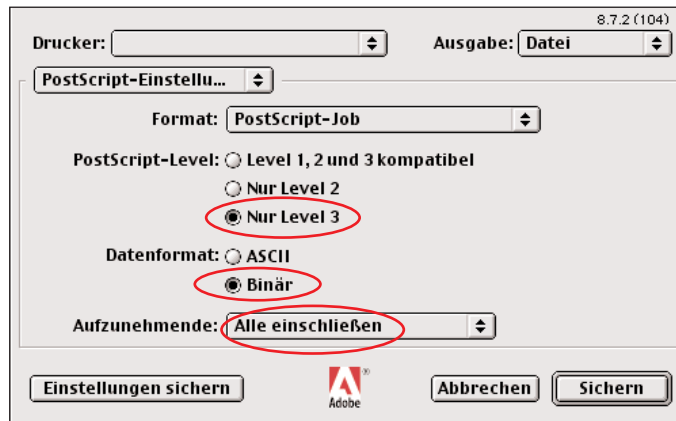
! Don't forget to save a JPG-file of the PDF-file for checking. (have a look at the description "jpgfromacrobat.pdf")

# QuarkXpress / PDF-Export

These screenshots are made form version 5.0. You can easily use the settings analogous for any other version too.

Step 1:

Choose the Adobe-Laserwriter (this is important to create good PDF-files). Please take the following settings. (enclose all)



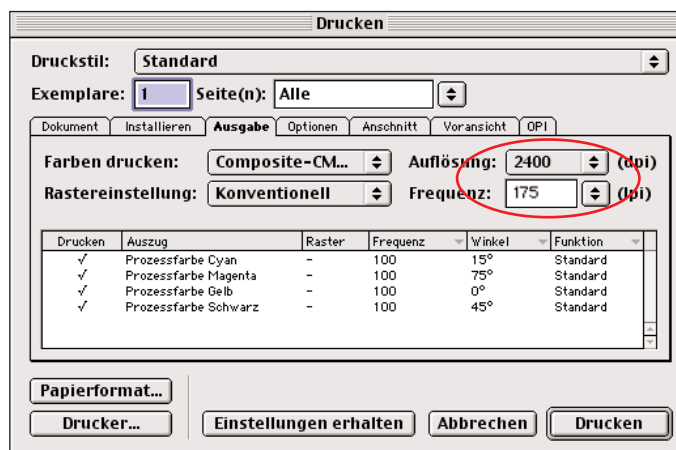
Step 2:

Take the PPD-file for Acrobat Distiller.



Step 3:

Choose the right resolution.

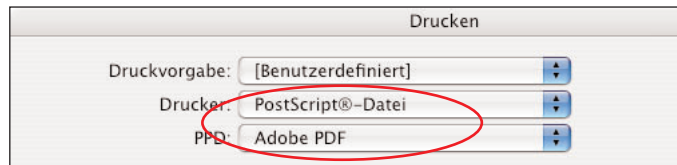


! We serve the correct Distiller-settings or you can define them with our guide "setdistac.pdf" for your own.

# Indesign / PDF-Export

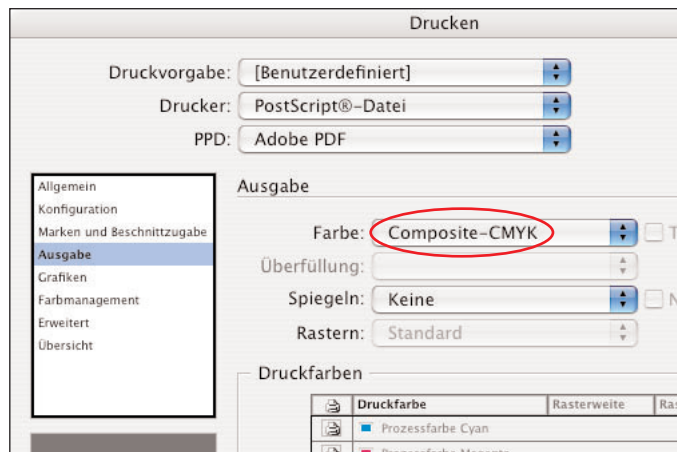
## Step 1:

Use "print" for the program Indesign CS.  
Take "PostScript-File" for the printer.  
And choose "Adobe PDF" as PPD-file.



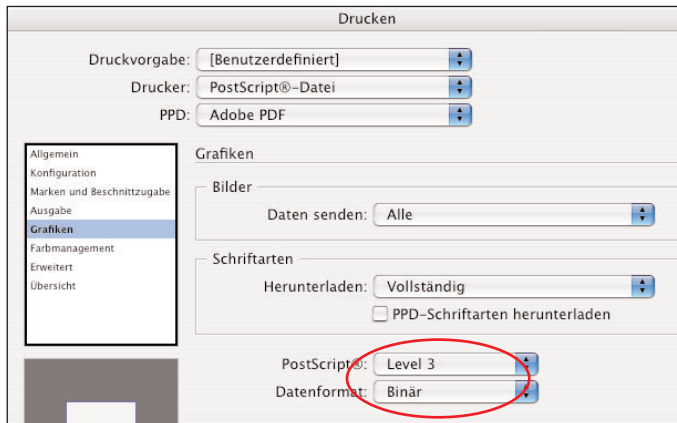
## Step 2:

Please choose "Composite-CMYK" or "Composite-unchanged" in the output-menu.



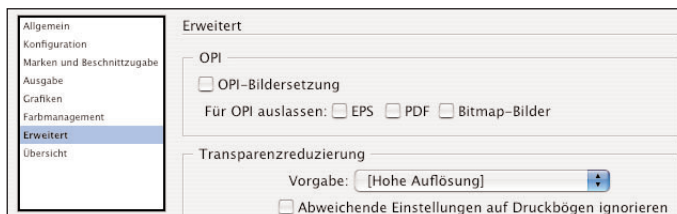
## Step 3:

Please take the displayed settings (PS-"Level 3" is important)



## Step 4:

Please mind these settings for designs with defined transparencies.  
But an EPS-Export may be more suitable for your design-data.

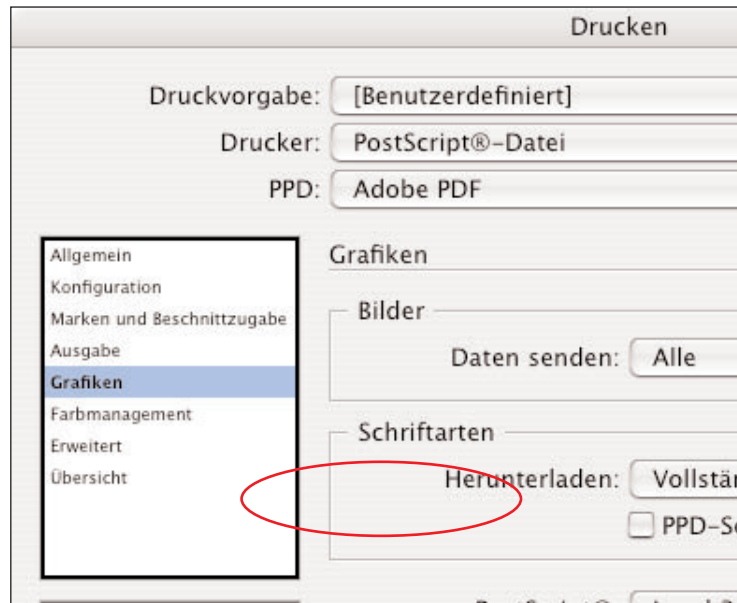


! We serve the correct Distiller-settings or you can define them with our guide "setdistac.pdf" for your own.

# Indesign / EPS Export

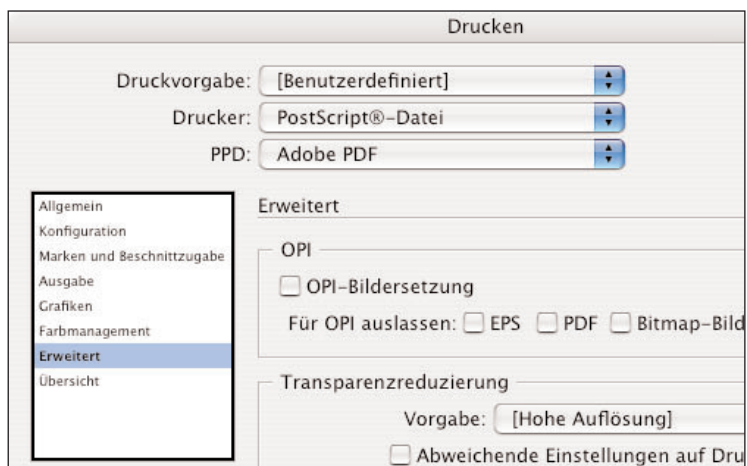
Step 1:

Use "export" for the program Indesign CS.  
Choose the data-format "EPS".

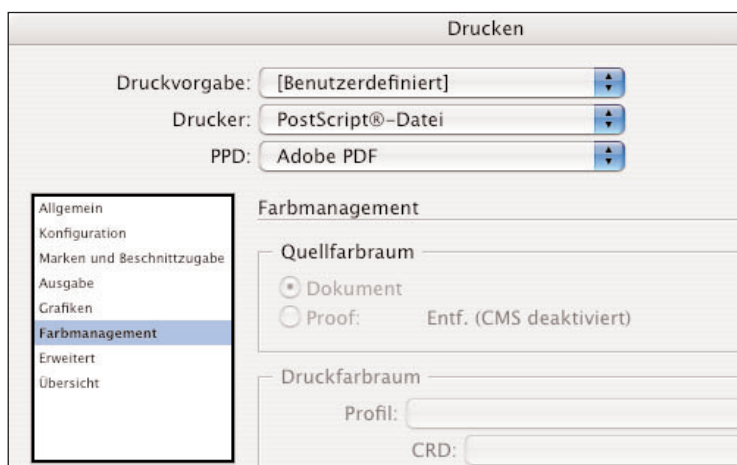


Step 2:

Take the displayed settings in the shown menu-window.



Step 3:

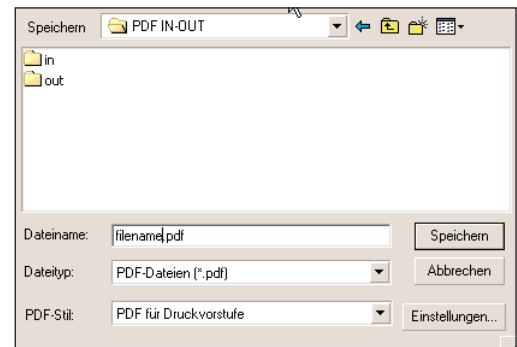


! This method is more suitable to create a correct data-delivery-file with transparencies than to create a PDF-file. (till transparencies can be correctly implemented with a newer Distiller-version)

# Corel Draw / PDF-Export

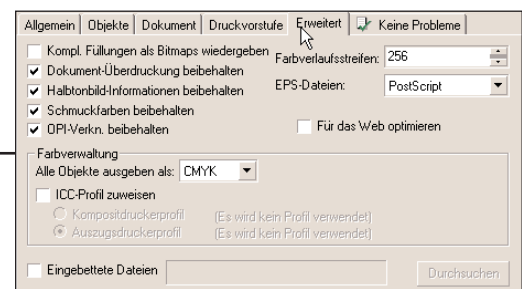
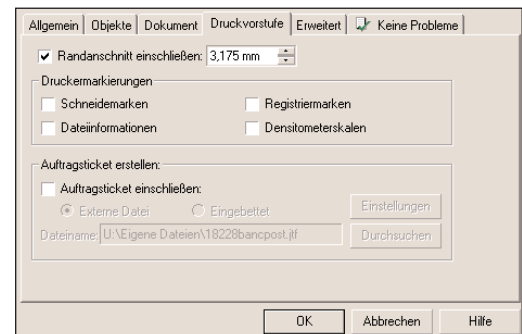
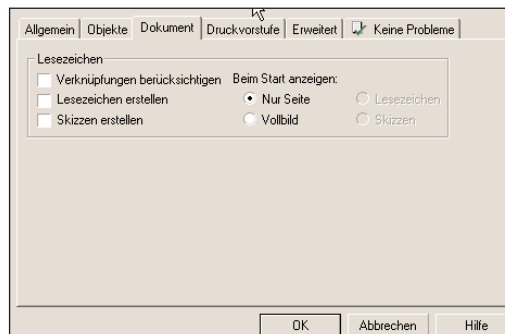
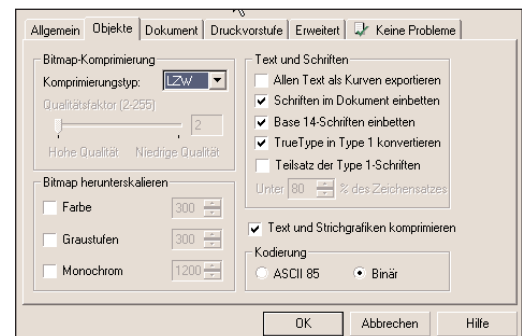
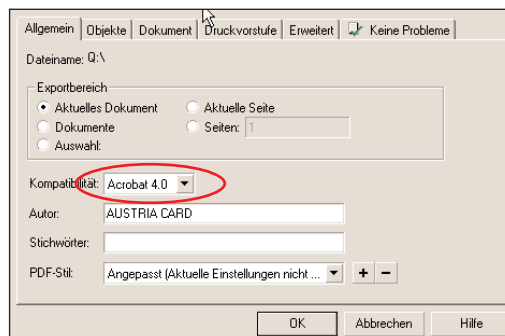
Step 1:

You can save the CorelDraw-design easily as PDF-file with the option "Publish to PDF".

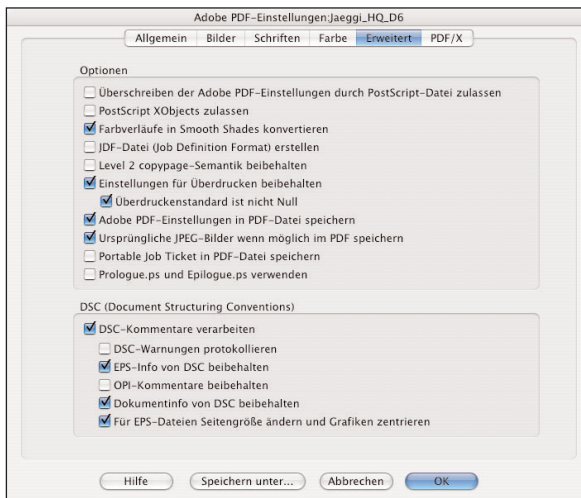
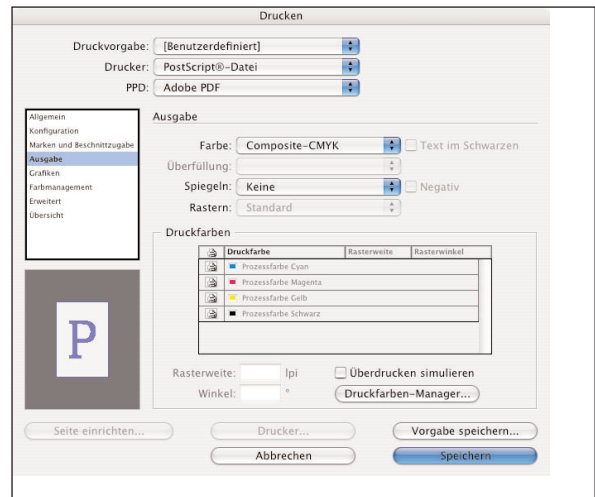
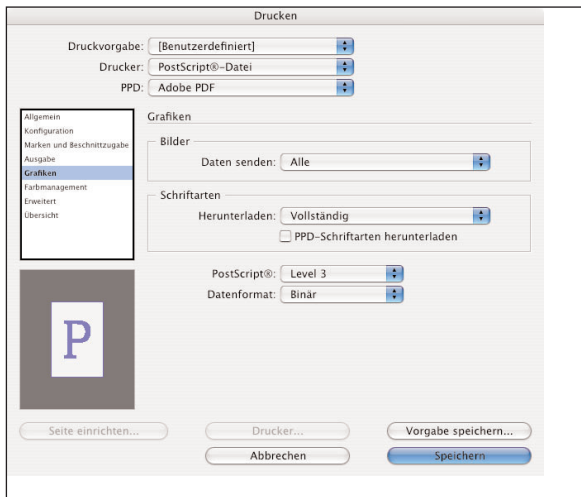
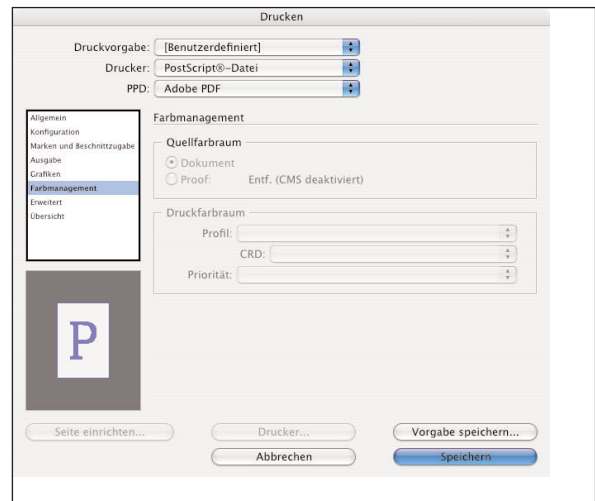
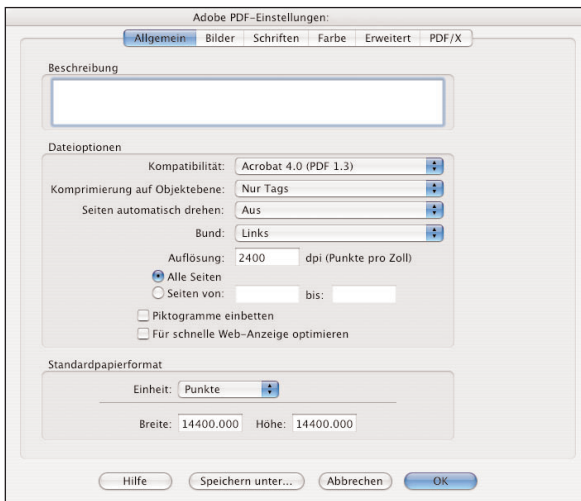


Step 2-6:

Use the displayed extended-settings in the following menu-sheets.



# Distiller Settings for PDF 1.3



## Austria Card-Distiller Settings

See screenshots to configure distiller-setting on your own or download the settingfiles for Apple und PC.

[ac\\_pdf\\_setting\\_apple.joboptions](#)

[ac\\_pdf\\_setting\\_pc.joboptions](#)